



S.I.A.E.P. MONT-DE-MARSAN

Campet Lamolère (Landes)

Document non public

**Inspection vidéo caméra
Thermométrie et log de productivité**

G. ROIGNOT et A. BELKAID

Février 1993

R 36845 AQI 4S 93

RÉSUMÉ

La Régie des Eaux et de l'Assainissement de Mont-de-Marsan a demandé au BRGM de réaliser l'inspection de réception par caméra-vidéo du nouveau forage d'AEP à Campet Lamolère.

Cette inspection réalisée le 6 janvier 1993 montre une chambre de pompage Ø 13" 3/8 correctement vissée et en bon état.

La colonne de captage en Ø 8" 5/8 est bien centrée avec un massif de gravier visible. Les crépines inox à fil enroulé sont en bon état et correctement vissées.

Le profil de productivité montre que 80 % du débit provient de l'intervalle 45-57 m.

Le profil de température indique une augmentation régulière de 14,5 à 15,3°C.

La conductivité de l'eau est homogène sur la hauteur captée, avec une valeur de 0,376 milli-Siemens/cm, sans changement entre les conditions statiques ou dynamiques.

Liste des figures

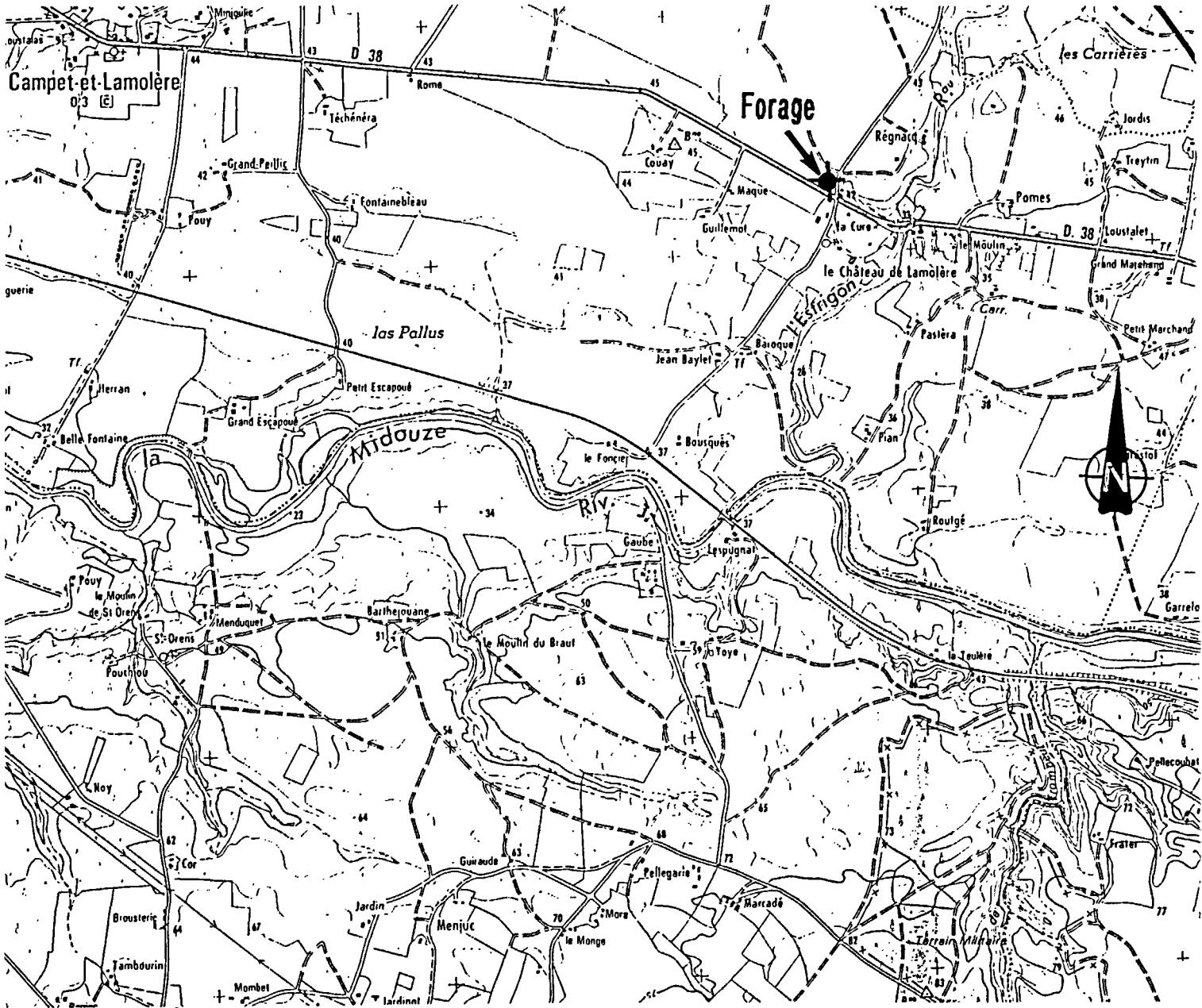
- 1 – Plan de situation
- 2 – Coupe technique de l'ouvrage
- 3 – Log de productivité
- 4 – Log de température et de conductivité en pompage
- 5 – Log de température et de conductivité en statique

Liste des annexes

- 1 – Mesures effectuées en dynamique
- 2 – Mesures effectuées en statique
- 3 – Photos d'écran

PLAN DE SITUATION

Echelle 1/25000



1. INTRODUCTION

Le présent rapport rend compte de l'inspection vidéo-caméra et des profils de productivité et de température effectués à la suite de l'exécution du nouveau forage pour l'AEP de Mont-de-Marsan à Campet Lamolère (voir figure 1).

2. INSTRUMENTATION

(origine des profondeurs : haut tubage acier)

Date de l'intervention : 06/01/93

Matériel utilisé

- atelier d'inspection du BRGM Aquitaine avec vidéo-caméra couleur CCD
- atelier de pompage avec électropompe immergée Ø 6"
- micro-moulinet Hydrologic
- sonde multiparamètres

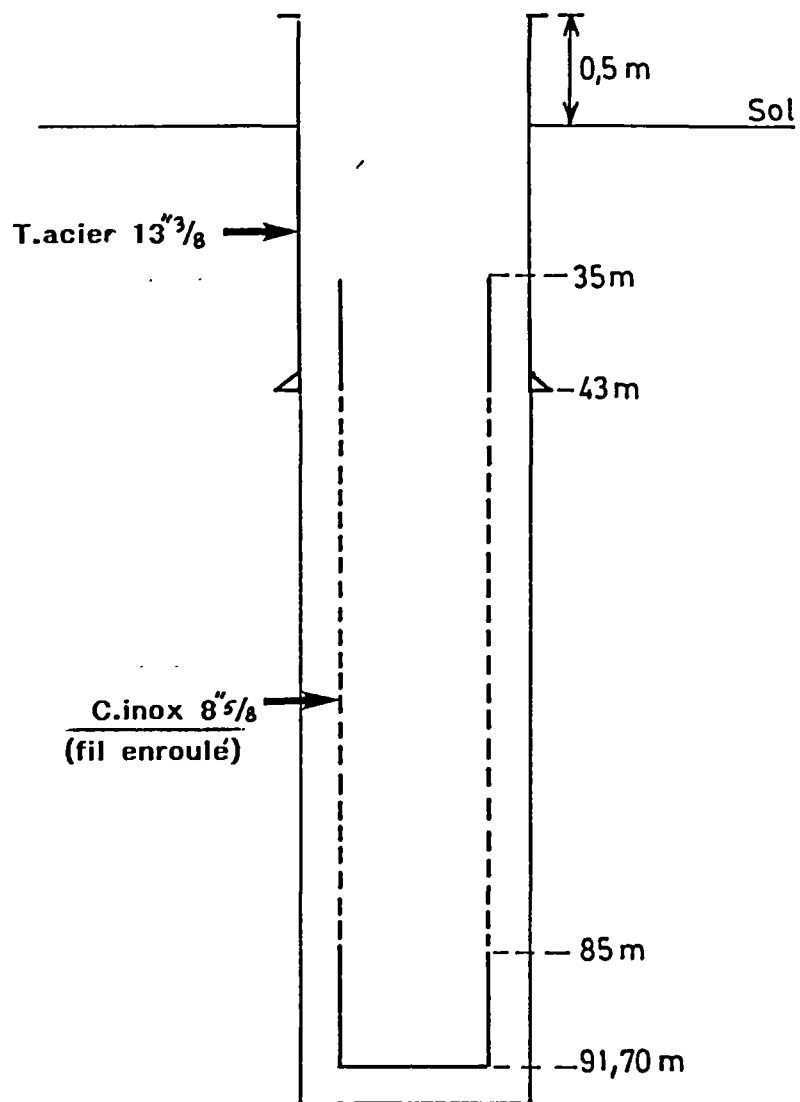
Travaux réalisés

- inspection vidéo-caméra sans pompage de 0 à 19 m
- inspection vidéo-caméra avec pompage de 19 à 92,30 m
- 25 points de mesure de vitesse au micro-moulinet en pompage à 80 m³/h
- thermométrie et mesure de la conductivité entre le fond du forage et le niveau piézométrique en pompage à 70,5 m³/h et en statique

Documents visuels

- une cassette VHS-SECAM de l'enregistrement de l'inspection est fournie
- photos d'écran en annexe

COUPE TECHNIQUE DE L'OUVRAGE



3. INSPECTION DU FORAGE

Coupe technique du forage : voir figure 2.

Le forage est constitué d'une chambre de pompage en tubage acier vissé de Ø 13" 3/8 de + 0,50 à - 43 m en longueur de 9 m environ.

Le sommet de la colonne de captage en Ø 8" 5/8 se trouve à - 35 m :

- tube plein inox de - 35 à - 43 m
- crépine inox en fil enroulé de - 43 m - 87,70 m (base des crépines).

Elles sont en bon état et propres sauf de - 81 m à - 86 m où elles apparaissent légèrement sales sans que ces dépôts soient gênants pour la productivité de l'ouvrage.

Les raccords sont correctement vissés.

La colonne de captage est bien centrée avec un massif de gravier apparent.

Les dépôts décantés en fond de forage ont une apparence gélatineuse.

4. DESCRIPTION DETAILLEE

(origine des profondeurs : bride du tubage acier)

Profondeur (m)	Elément	Observation
0	tubage acier 13" 3/8	
5.30	raccord vissé	
15.20	raccord vissé	
24.90	raccord vissé	
34.40	raccord vissé	
36.40	réduction 13" 3/8 – 8" 5/8	
	porte-crépines inox	massif de gravier apparent
38.70	raccord vissé tube plein inox	
45.00	haut des crépines inox à fil enroulé	
57.20	raccord vissé	
63.40	raccord vissé	
69.50	raccord vissé	
75.60	raccord vissé	
81.70	raccord vissé	
86.00		crépines légèrement sales
87.70	base des crépines	
92.30	fond du forage	

5. LOG DE PRODUCTIVITE

(voir figure 3)

Les mesures de la vitesse de l'eau ont été effectuées au micro-moulinet avec un pompage à 80 m³/h (pompe installée à 19 m)

– niveau au repos 7.90 m/haut du tubage
– niveau dynamique 14.90 m/haut du tubage

Les venues d'eau se répartissent comme suit :

de – 45 m à – 53 m	50 % du débit
de – 53 m à – 57 m	20 %
de – 57 m à – 64 m	10 %
de – 64 m à – 80 m	10 %
de – 80 m à – 90 m	10 %
Total	100 %

6. LOG DE TEMPERATURE ET DE CONDUCTIVITE

(voir figures 4 et 5)

Un log de température et de conductivité a été réalisé. Les mesures sont enregistrées en continu sur toute la hauteur du forage.

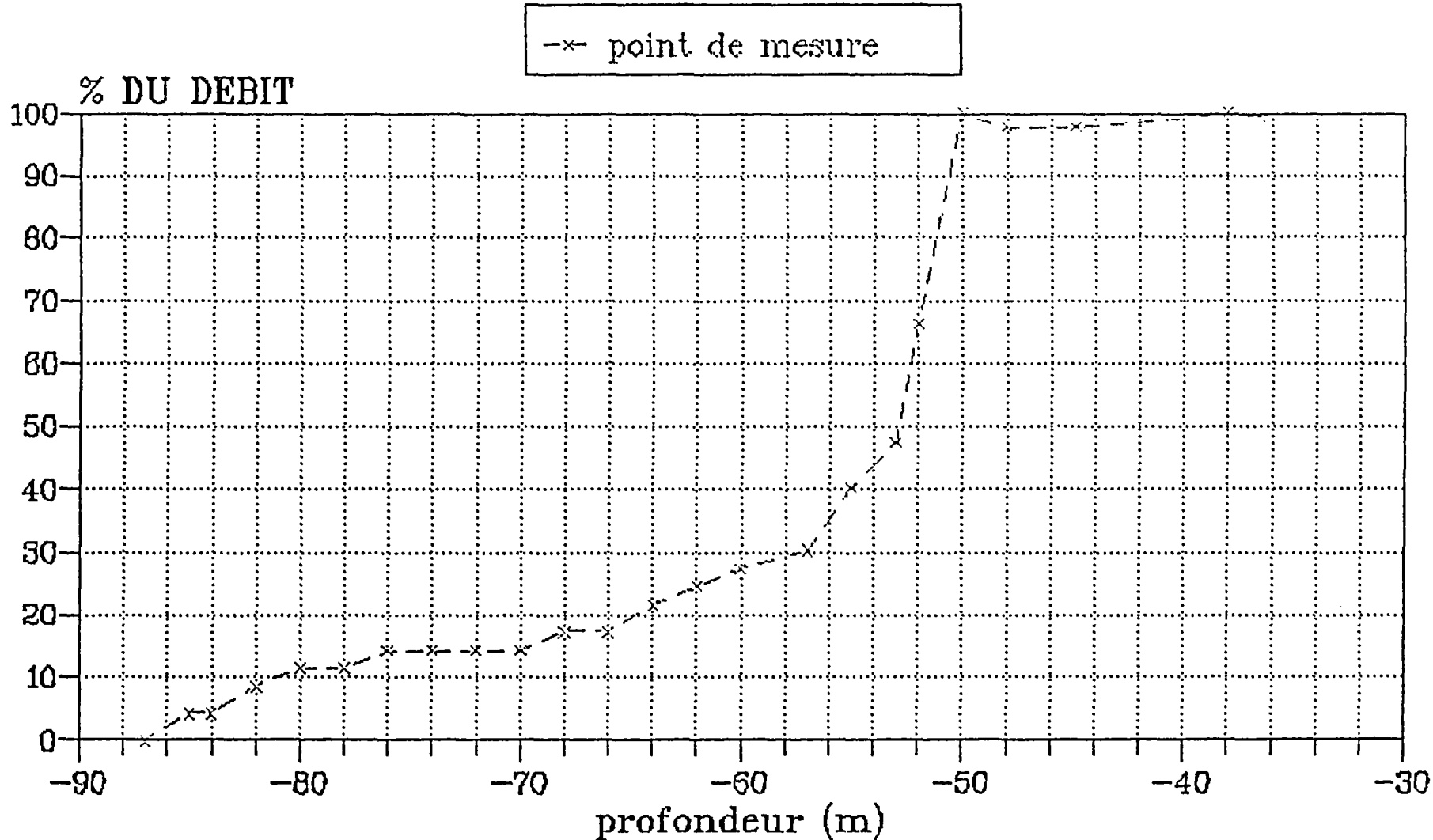
- 1) Log en pompage (débit 70,5 m³/h)
- 2) Log en statique (puits au repos)

La température en sortie de pompe est de 14,5°C en fond de forage, la température est mesurée à 15,3°C Le gradient observé est inférieur à 1°C pour 100 m.

La conductivité de l'eau, fonction de la minéralisation totale de l'eau, est de 0,376mS/cm (milli-siemens/cm). Une augmentation de conductivité à 0,767mS/cm, mesurée en fond de forage, est due à la présence des dépôts.

Il n'y a pas de changement significatif entre les 2 logs effectués en pompage et en statique.

LOG DE PRODUCTIVITE. MICROMOULINET
CAMPET LA MOLERE - MT MARSAN (40)



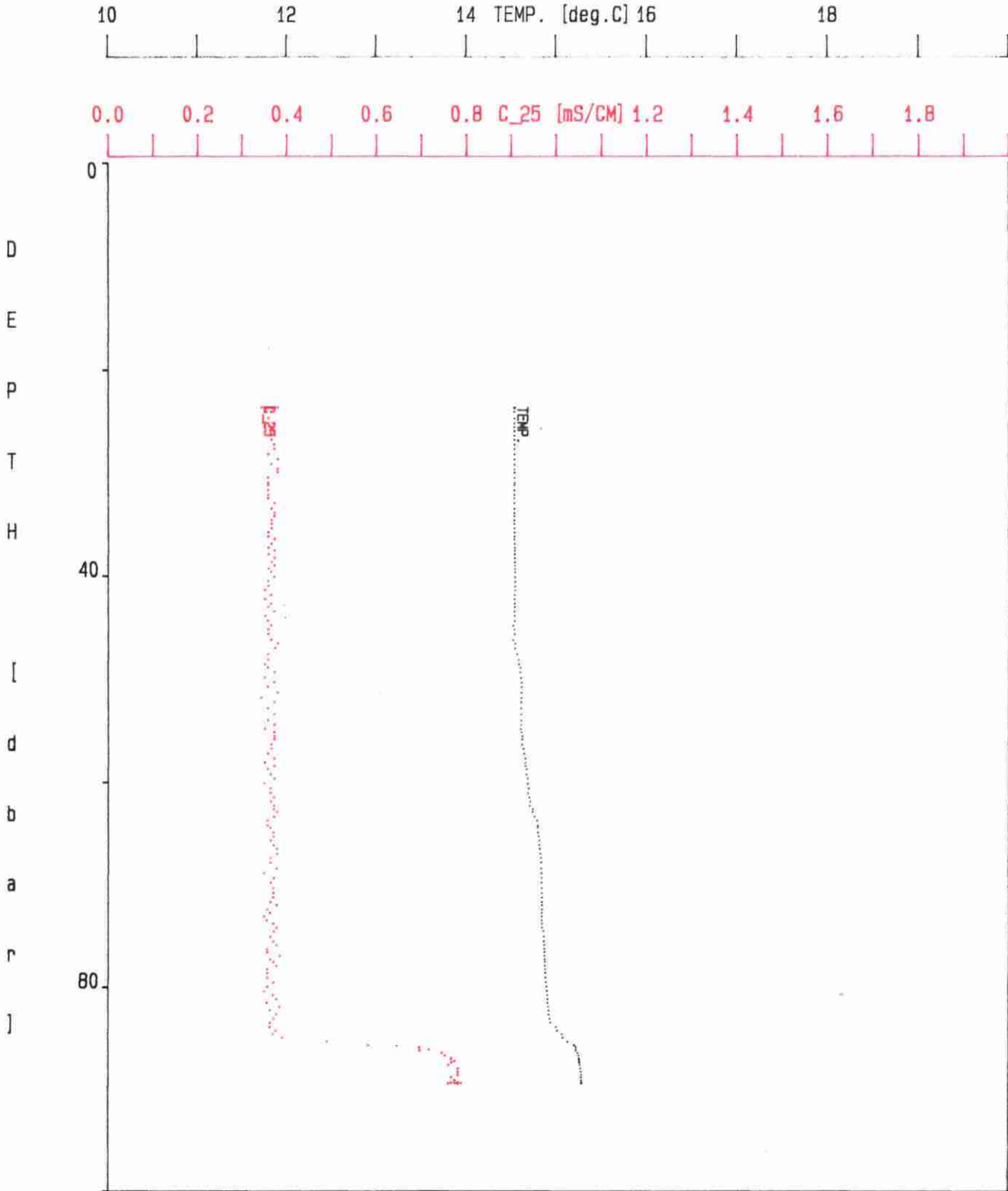
LOG DE PRODUCTIVITE. MICROMOULINET
 CAMPET LA MOLERE - MT MARSAN (40)

date : 06.01.93
 base tps (sec.) 23
 débit (m3) : 80
 niv. piézo.: 7.90M

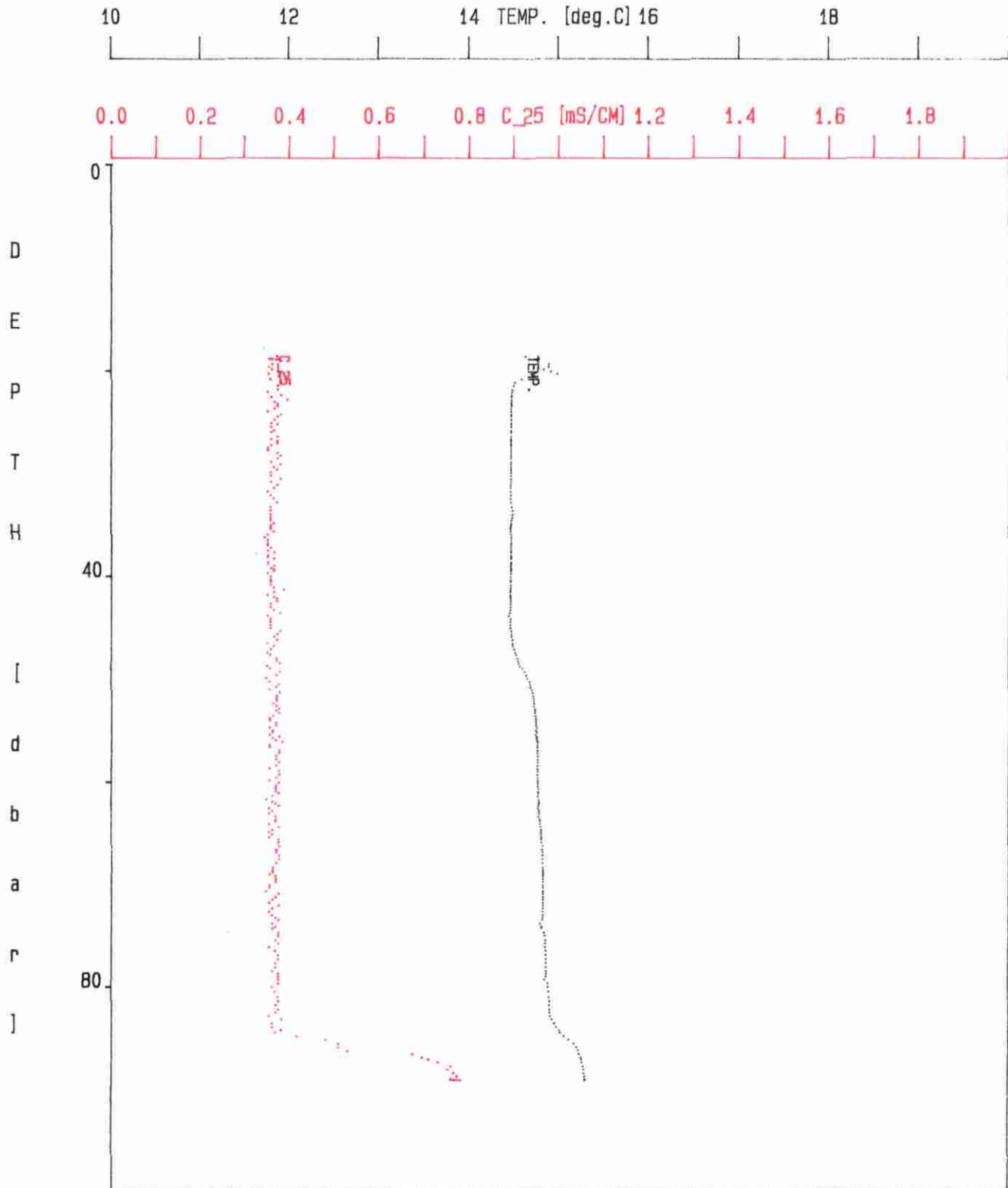
N.D 14.90M

Profondeur(m)	tours	% débit	Vitesse(m/s)	Diam(mm)
-36.6	69	99.32	0.68	203
-38	70	100.75	0.69	203
-44.9	68	97.88	0.67	203
-48	68	97.88	0.67	203
-50	70	100.75	0.69	203
-52	46	66.21	0.45	203
-53	33	47.50	0.33	203
-55	28	40.30	0.28	203
-57	21	30.23	0.21	203
-60	19	27.35	0.19	203
-62	17	24.47	0.17	203
-64	15	21.59	0.15	203
-66	12	17.27	0.12	203
-68	12	17.27	0.12	203
-70	10	14.39	0.10	203
-72	10	14.39	0.10	203
-74	10	14.39	0.10	203
-76	10	14.39	0.10	203
-78	8	11.51	0.08	203
-80	8	11.51	0.08	203
-82	6	8.64	0.06	203
-84	3	4.32	0.03	203
-85	3	4.32	0.03	203
-87	0	0.000	0.000	203

STATION NR. : CAMPET	I PROJECT : POMPAGE 70.5M3/H ND: 14.9
STATION NAME : CAMPET LAMOLERE	I EXPEDITION : 06.01.91
STATION TEXT :	I PROFILE TYPE :
STATION LAT.: 00x00'00	I SENSORS :
LON.: 00x00'00	I JOB MADE BY :



STATION NR. : CAMP2	I PROJECT : MT MARSAN - 06.01.93
STATION NAME : CAMPET LAMOLERE	I EXPEDITION : STATIQUE
STATION TEXT :	I PROFILE TYPE :
STATION LAT.: 00x00'00	I SENSORS :
LON.: 00x00'00	I JOB MADE BY :



C:\SONDE\ECOSOFT\93106151.mer
plotted: Thu Feb 18 09: 21: 32 1993

CONCLUSION

La chambre de pompage 13" 3/8 acier ne présente pas de défaut. Les éléments de tubage sont vissés correctement.

La colonne de captage 8" 5/8 inox est en bon état, les crépines sont propres, le centrage des crépines est correct et le massif filtrant est bien en place.

50 % environ des apports d'eau sont localisés dans la partie supérieure des crépines entre - 45 m et - 53 m. Au-dessous, les arrivées d'eau sont plus faibles mais se poursuivent jusqu'à la base des crépines.

ANNEXES

ANNEXE 1

Mesures effectuées en dynamique

DEPTH [dbar]	TEMP. [deg.C]	OXY [%]	REDOX [mV]	C 25 [mS/CM]		
+18.5	+14.63	+14.28	-0.158	+0.371	06.01.93	15:19:05
+18.7	+14.74	+12.42	-0.158	+0.356	06.01.93	15:22:54
+18.7	+14.75	+12.33	-0.158	+0.355	06.01.93	15:22:58
+18.7	+14.76	+12.27	-0.158	+0.355	06.01.93	15:23:01
+18.7	+14.77	+12.20	-0.158	+0.363	06.01.93	15:23:04
+18.7	+14.77	+12.15	-0.158	+0.363	06.01.93	15:23:06
+18.7	+14.79	+12.12	-0.158	+0.377	06.01.93	15:23:10
+18.9	+14.77	+12.00	-0.158	+0.370	06.01.93	15:23:13
+19.3	+14.90	+11.61	-0.158	+0.361	06.01.93	15:23:16
+19.5	+14.89	+11.12	-0.157	+0.354	06.01.93	15:23:19
+19.8	+14.84	+10.98	-0.157	+0.362	06.01.93	15:23:22
+20.0	+14.92	+10.21	-0.156	+0.376	06.01.93	15:23:25
+20.2	+14.99	+10.40	-0.156	+0.353	06.01.93	15:23:28
+20.5	+14.74	+10.61	-0.155	+0.377	06.01.93	15:23:31
+20.7	+14.59	+10.70	-0.155	+0.357	06.01.93	15:23:34
+21.0	+14.51	+10.68	-0.155	+0.380	06.01.93	15:23:37
+21.4	+14.49	+10.64	-0.155	+0.372	06.01.93	15:23:40
+21.7	+14.48	+10.68	-0.155	+0.373	06.01.93	15:23:43
+22.0	+14.47	+10.77	-0.155	+0.351	06.01.93	15:23:46
+22.3	+14.47	+10.87	-0.154	+0.380	06.01.93	15:23:49
+22.5	+14.47	+11.05	-0.154	+0.358	06.01.93	15:23:51
+22.7	+14.47	+11.41	-0.155	+0.395	06.01.93	15:23:55
+22.9	+14.47	+11.87	-0.153	+0.365	06.01.93	15:23:58
+23.1	+14.47	+12.29	-0.153	+0.373	06.01.93	15:24:01
+23.3	+14.47	+12.62	-0.154	+0.373	06.01.93	15:24:04
+23.6	+14.47	+12.89	-0.154	+0.365	06.01.93	15:24:07
+23.9	+14.47	+13.16	-0.154	+0.351	06.01.93	15:24:10
+24.1	+14.47	+13.39	-0.154	+0.380	06.01.93	15:24:13
+24.3	+14.47	+13.54	-0.153	+0.373	06.01.93	15:24:15
+24.6	+14.47	+13.83	-0.152	+0.365	06.01.93	15:24:19
+25.0	+14.47	+14.30	-0.153	+0.358	06.01.93	15:24:22
+25.1	+14.47	+14.63	-0.153	+0.373	06.01.93	15:24:25
+25.3	+14.47	+16.39	-0.153	+0.358	06.01.93	15:24:28
+25.7	+14.47	+17.38	-0.153	+0.365	06.01.93	15:24:31
+25.9	+14.47	+18.04	-0.153	+0.358	06.01.93	15:24:34
+26.3	+14.47	+18.48	-0.153	+0.373	06.01.93	15:24:37
+26.5	+14.47	+18.77	-0.153	+0.358	06.01.93	15:24:40
+26.7	+14.47	+19.06	-0.153	+0.373	06.01.93	15:24:43
+26.9	+14.47	+19.27	-0.153	+0.373	06.01.93	15:24:46
+27.1	+14.47	+19.43	-0.153	+0.358	06.01.93	15:24:49
+27.4	+14.47	+19.50	-0.153	+0.351	06.01.93	15:24:52
+27.6	+14.47	+19.55	-0.153	+0.351	06.01.93	15:24:55
+27.9	+14.47	+19.62	-0.153	+0.373	06.01.93	15:24:58
+28.1	+14.47	+19.61	-0.153	+0.380	06.01.93	15:25:00
+28.4	+14.47	+19.62	-0.153	+0.373	06.01.93	15:25:04
+28.8	+14.47	+19.60	-0.153	+0.358	06.01.93	15:25:07
+29.0	+14.47	+19.60	-0.153	+0.380	06.01.93	15:25:10
+29.3	+14.47	+19.31	-0.153	+0.365	06.01.93	15:25:13
+29.5	+14.47	+19.24	-0.153	+0.373	06.01.93	15:25:16
+29.8	+14.47	+19.20	-0.153	+0.358	06.01.93	15:25:19
+30.1	+14.47	+19.14	-0.153	+0.358	06.01.93	15:25:22
+30.4	+14.47	+19.11	-0.153	+0.380	06.01.93	15:25:25
+30.7	+14.47	+19.07	-0.153	+0.358	06.01.93	15:25:28
+31.0	+14.47	+19.01	-0.153	+0.373	06.01.93	15:25:31
+31.3	+14.47	+18.93	-0.153	+0.365	06.01.93	15:25:34
+31.6	+14.47	+18.81	-0.153	+0.351	06.01.93	15:25:37
+32.0	+14.47	+18.72	-0.152	+0.358	06.01.93	15:25:40
+32.3	+14.47	+18.64	-0.152	+0.365	06.01.93	15:25:43
+32.7	+14.47	+18.57	-0.152	+0.373	06.01.93	15:25:46
+33.2	+14.48	+18.60	-0.152	+0.358	06.01.93	15:25:49
+33.5	+14.49	+18.69	-0.152	+0.358	06.01.93	15:25:52
+33.9	+14.49	+18.41	-0.152	+0.358	06.01.93	15:25:55
+34.2	+14.49	+18.14	-0.151	+0.358	06.01.93	15:25:58
+34.4	+14.48	+17.93	-0.151	+0.358	06.01.93	15:26:00
+34.7	+14.47	+18.00	-0.151	+0.365	06.01.93	15:26:04

DEPTH [dbar]	TEMP. [deg.C]	OXY [%]	REDOX [mV]	C 25 [mS/CM]		
+34.9	+14.47	+18.46	-0.151	+0.358	06.01.93	15:26:07
+35.1	+14.47	+18.95	-0.152	+0.358	06.01.93	15:26:10
+35.3	+14.46	+19.37	-0.152	+0.358	06.01.93	15:26:13
+35.6	+14.47	+19.26	-0.152	+0.365	06.01.93	15:26:16
+35.8	+14.47	+19.29	-0.153	+0.351	06.01.93	15:26:19
+36.1	+14.47	+19.33	-0.153	+0.343	06.01.93	15:26:22
+36.4	+14.47	+19.53	-0.153	+0.351	06.01.93	15:26:25
+36.7	+14.47	+19.42	-0.153	+0.351	06.01.93	15:26:28
+36.9	+14.46	+19.37	-0.153	+0.351	06.01.93	15:26:31
+37.2	+14.46	+19.13	-0.153	+0.358	06.01.93	15:26:34
+37.4	+14.46	+18.97	-0.153	+0.351	06.01.93	15:26:37
+37.6	+14.47	+20.14	-0.154	+0.365	06.01.93	15:26:40
+37.9	+14.47	+19.14	-0.155	+0.351	06.01.93	15:26:43
+38.0	+14.47	+18.93	-0.155	+0.351	06.01.93	15:26:46
+38.2	+14.47	+18.73	-0.155	+0.365	06.01.93	15:26:49
+38.5	+14.47	+18.71	-0.155	+0.351	06.01.93	15:26:52
+38.7	+14.46	+18.85	-0.155	+0.351	06.01.93	15:26:54
+38.9	+14.46	+18.69	-0.155	+0.365	06.01.93	15:26:58
+39.1	+14.47	+18.42	-0.155	+0.358	06.01.93	15:27:01
+39.3	+14.47	+18.22	-0.155	+0.365	06.01.93	15:27:04
+39.4	+14.47	+18.02	-0.155	+0.365	06.01.93	15:27:07
+39.6	+14.46	+17.80	-0.155	+0.351	06.01.93	15:27:10
+40.0	+14.46	+17.82	-0.155	+0.358	06.01.93	15:27:13
+40.3	+14.46	+18.38	-0.156	+0.358	06.01.93	15:27:16
+40.5	+14.46	+18.70	-0.156	+0.358	06.01.93	15:27:19
+40.8	+14.46	+18.49	-0.157	+0.358	06.01.93	15:27:22
+41.0	+14.46	+18.51	-0.156	+0.365	06.01.93	15:27:25
+41.3	+14.47	+18.08	-0.156	+0.387	06.01.93	15:27:28
+41.5	+14.46	+18.30	-0.157	+0.365	06.01.93	15:27:31
+41.7	+14.46	+18.19	-0.157	+0.351	06.01.93	15:27:34
+41.9	+14.47	+18.07	-0.157	+0.365	06.01.93	15:27:37
+42.1	+14.47	+17.81	-0.157	+0.373	06.01.93	15:27:39
+42.4	+14.47	+17.71	-0.157	+0.373	06.01.93	15:27:43
+42.6	+14.47	+17.61	-0.157	+0.358	06.01.93	15:27:46
+42.9	+14.46	+17.25	-0.157	+0.358	06.01.93	15:27:49
+43.2	+14.46	+16.42	-0.156	+0.365	06.01.93	15:27:52
+43.5	+14.46	+15.76	-0.155	+0.380	06.01.93	15:27:55
+43.8	+14.44	+15.34	-0.155	+0.351	06.01.93	15:27:58
+44.1	+14.47	+15.45	-0.154	+0.358	06.01.93	15:28:01
+44.4	+14.47	+15.58	-0.155	+0.358	06.01.93	15:28:03
+44.7	+14.46	+16.31	-0.156	+0.358	06.01.93	15:28:07
+45.0	+14.47	+16.34	-0.156	+0.358	06.01.93	15:28:10
+45.3	+14.48	+15.82	-0.155	+0.380	06.01.93	15:28:13
+45.6	+14.48	+15.46	-0.155	+0.373	06.01.93	15:28:16
+45.8	+14.48	+15.18	-0.155	+0.365	06.01.93	15:28:19
+46.1	+14.49	+15.59	-0.156	+0.372	06.01.93	15:28:22
+46.4	+14.49	+15.37	-0.156	+0.350	06.01.93	15:28:25
+46.7	+14.50	+14.92	-0.155	+0.365	06.01.93	15:28:28
+47.0	+14.51	+14.77	-0.155	+0.358	06.01.93	15:28:31
+47.3	+14.52	+14.63	-0.154	+0.350	06.01.93	15:28:34
+47.5	+14.53	+14.38	-0.154	+0.357	06.01.93	15:28:37
+47.9	+14.55	+14.35	-0.154	+0.372	06.01.93	15:28:40
+48.1	+14.55	+14.40	-0.154	+0.372	06.01.93	15:28:43
+48.4	+14.56	+14.67	-0.154	+0.379	06.01.93	15:28:46
+48.6	+14.57	+14.17	-0.153	+0.350	06.01.93	15:28:49
+48.8	+14.60	+13.71	-0.153	+0.357	06.01.93	15:28:52
+49.2	+14.63	+13.39	-0.152	+0.378	06.01.93	15:28:55
+49.5	+14.65	+13.19	-0.152	+0.371	06.01.93	15:28:58
+49.8	+14.66	+12.93	-0.151	+0.349	06.01.93	15:29:01
+50.1	+14.69	+12.64	-0.151	+0.356	06.01.93	15:29:04
+50.4	+14.69	+12.49	-0.151	+0.378	06.01.93	15:29:07
+50.7	+14.69	+12.40	-0.150	+0.371	06.01.93	15:29:10
+50.9	+14.70	+12.29	-0.150	+0.356	06.01.93	15:29:12
+51.2	+14.71	+12.14	-0.150	+0.378	06.01.93	15:29:16
+51.5	+14.72	+12.05	-0.150	+0.370	06.01.93	15:29:19

DEPTH [dbar]	TEMP. [deg.C]	OXY [%]	REDOX [mV]	C 25 [mS/CM]		
+51.7	+14.73	+12.01	-0.150	+0.370	06.01.93	15:29:22
+52.0	+14.73	+11.80	-0.149	+0.370	06.01.93	15:29:25
+52.2	+14.73	+11.88	-0.149	+0.363	06.01.93	15:29:28
+52.5	+14.73	+11.78	-0.149	+0.370	06.01.93	15:29:31
+52.8	+14.74	+12.16	-0.150	+0.377	06.01.93	15:29:34
+52.9	+14.74	+11.98	-0.150	+0.370	06.01.93	15:29:37
+53.2	+14.74	+11.93	-0.150	+0.377	06.01.93	15:29:40
+53.5	+14.75	+11.90	-0.150	+0.363	06.01.93	15:29:43
+53.7	+14.75	+12.92	-0.151	+0.355	06.01.93	15:29:46
+53.9	+14.75	+12.91	-0.152	+0.355	06.01.93	15:29:49
+54.1	+14.75	+13.51	-0.153	+0.370	06.01.93	15:29:52
+54.4	+14.75	+13.07	-0.153	+0.370	06.01.93	15:29:55
+54.6	+14.76	+12.91	-0.153	+0.355	06.01.93	15:29:58
+54.9	+14.75	+12.96	-0.153	+0.363	06.01.93	15:30:01
+55.1	+14.77	+12.25	-0.152	+0.363	06.01.93	15:30:04
+55.3	+14.75	+12.02	-0.151	+0.356	06.01.93	15:30:07
+55.5	+14.77	+11.91	-0.151	+0.377	06.01.93	15:30:10
+55.6	+14.76	+12.03	-0.151	+0.363	06.01.93	15:30:13
+55.9	+14.77	+12.16	-0.152	+0.370	06.01.93	15:30:16
+56.0	+14.77	+12.00	-0.152	+0.384	06.01.93	15:30:19
+56.3	+14.77	+11.99	-0.151	+0.355	06.01.93	15:30:22
+56.6	+14.77	+11.74	-0.151	+0.355	06.01.93	15:30:25
+56.9	+14.77	+11.41	-0.151	+0.377	06.01.93	15:30:28
+57.1	+14.77	+11.22	-0.150	+0.377	06.01.93	15:30:31
+57.4	+14.77	+11.00	-0.150	+0.370	06.01.93	15:30:34
+57.7	+14.77	+10.93	-0.150	+0.370	06.01.93	15:30:37
+58.0	+14.77	+10.77	-0.149	+0.377	06.01.93	15:30:40
+58.3	+14.77	+10.77	-0.149	+0.370	06.01.93	15:30:43
+58.6	+14.77	+11.05	-0.150	+0.355	06.01.93	15:30:46
+58.9	+14.77	+10.82	-0.150	+0.377	06.01.93	15:30:49
+59.2	+14.77	+10.55	-0.149	+0.377	06.01.93	15:30:52
+59.5	+14.77	+10.33	-0.149	+0.370	06.01.93	15:30:55
+59.8	+14.77	+10.20	-0.148	+0.355	06.01.93	15:30:58
+60.0	+14.77	+10.13	-0.148	+0.377	06.01.93	15:31:01
+60.3	+14.77	+9.92	-0.148	+0.370	06.01.93	15:31:04
+60.5	+14.79	+9.73	-0.148	+0.370	06.01.93	15:31:07
+60.8	+14.78	+9.66	-0.148	+0.370	06.01.93	15:31:09
+61.0	+14.78	+9.56	-0.148	+0.377	06.01.93	15:31:13
+61.2	+14.77	+9.46	-0.148	+0.363	06.01.93	15:31:16
+61.6	+14.79	+10.01	-0.149	+0.348	06.01.93	15:31:19
+61.8	+14.79	+10.04	-0.149	+0.362	06.01.93	15:31:22
+62.0	+14.79	+10.63	-0.150	+0.370	06.01.93	15:31:25
+62.2	+14.78	+10.43	-0.150	+0.377	06.01.93	15:31:28
+62.5	+14.78	+10.80	-0.151	+0.355	06.01.93	15:31:31
+62.7	+14.79	+11.03	-0.151	+0.362	06.01.93	15:31:33
+63.0	+14.80	+10.73	-0.150	+0.355	06.01.93	15:31:37
+63.3	+14.78	+10.45	-0.150	+0.370	06.01.93	15:31:40
+63.6	+14.80	+10.54	-0.150	+0.370	06.01.93	15:31:43
+63.8	+14.81	+10.54	-0.149	+0.369	06.01.93	15:31:46
+64.1	+14.80	+10.71	-0.150	+0.355	06.01.93	15:31:49
+64.4	+14.81	+10.38	-0.149	+0.377	06.01.93	15:31:52
+64.7	+14.82	+10.28	-0.149	+0.362	06.01.93	15:31:55
+64.9	+14.82	+10.07	-0.149	+0.355	06.01.93	15:31:57
+65.1	+14.82	+10.23	-0.149	+0.362	06.01.93	15:32:01
+65.4	+14.82	+9.99	-0.148	+0.355	06.01.93	15:32:04
+65.6	+14.82	+9.99	-0.148	+0.377	06.01.93	15:32:07
+65.9	+14.83	+9.98	-0.148	+0.377	06.01.93	15:32:10
+66.3	+14.83	+9.84	-0.148	+0.377	06.01.93	15:32:13
+66.6	+14.82	+9.80	-0.148	+0.369	06.01.93	15:32:16
+66.9	+14.83	+9.68	-0.148	+0.369	06.01.93	15:32:18
+67.2	+14.83	+9.43	-0.147	+0.377	06.01.93	15:32:22
+67.5	+14.83	+9.29	-0.147	+0.377	06.01.93	15:32:25
+67.9	+14.83	+9.08	-0.147	+0.369	06.01.93	15:32:28
+68.3	+14.83	+9.15	-0.146	+0.362	06.01.93	15:32:31
+68.6	+14.84	+9.02	-0.146	+0.362	06.01.93	15:32:34

DEPTH [dbar]	TEMP. [deg.C]	OXY [%]	REDOX [mV]	C 25 [mS/CM]		
+68.8	+14.83	+8.93	-0.146	+0.362	06.01.93	15:32:37
+69.0	+14.83	+8.87	-0.146	+0.355	06.01.93	15:32:40
+69.2	+14.83	+8.81	-0.146	+0.369	06.01.93	15:32:42
+69.5	+14.83	+8.70	-0.146	+0.369	06.01.93	15:32:46
+69.7	+14.83	+8.63	-0.145	+0.369	06.01.93	15:32:49
+70.1	+14.83	+8.57	-0.145	+0.355	06.01.93	15:32:52
+70.3	+14.83	+8.61	-0.145	+0.355	06.01.93	15:32:55
+70.7	+14.83	+8.71	-0.145	+0.347	06.01.93	15:32:58
+70.9	+14.83	+8.80	-0.146	+0.377	06.01.93	15:33:01
+71.2	+14.84	+8.77	-0.146	+0.369	06.01.93	15:33:04
+71.5	+14.84	+8.93	-0.146	+0.362	06.01.93	15:33:07
+71.8	+14.83	+9.18	-0.147	+0.355	06.01.93	15:33:10
+72.0	+14.83	+9.33	-0.147	+0.377	06.01.93	15:33:13
+72.3	+14.83	+9.37	-0.147	+0.362	06.01.93	15:33:16
+72.6	+14.83	+9.20	-0.147	+0.355	06.01.93	15:33:19
+73.0	+14.83	+8.83	-0.147	+0.362	06.01.93	15:33:22
+73.2	+14.83	+8.67	-0.146	+0.369	06.01.93	15:33:25
+73.4	+14.83	+9.14	-0.147	+0.377	06.01.93	15:33:27
+73.8	+14.80	+8.92	-0.147	+0.362	06.01.93	15:33:31
+74.1	+14.82	+8.77	-0.147	+0.369	06.01.93	15:33:34
+74.2	+14.82	+9.09	-0.147	+0.362	06.01.93	15:33:37
+74.7	+14.85	+8.97	-0.147	+0.376	06.01.93	15:33:40
+75.0	+14.86	+8.98	-0.147	+0.376	06.01.93	15:33:43
+75.4	+14.87	+8.96	-0.147	+0.369	06.01.93	15:33:46
+75.7	+14.86	+8.90	-0.147	+0.376	06.01.93	15:33:49
+76.1	+14.86	+8.88	-0.147	+0.354	06.01.93	15:33:51
+76.4	+14.87	+8.93	-0.147	+0.369	06.01.93	15:33:55
+76.8	+14.87	+8.95	-0.147	+0.376	06.01.93	15:33:58
+77.2	+14.87	+9.00	-0.147	+0.376	06.01.93	15:34:01
+77.6	+14.87	+9.02	-0.147	+0.369	06.01.93	15:34:04
+78.0	+14.87	+8.92	-0.147	+0.369	06.01.93	15:34:07
+78.4	+14.88	+9.70	-0.148	+0.362	06.01.93	15:34:10
+78.7	+14.88	+9.47	-0.148	+0.376	06.01.93	15:34:13
+78.9	+14.87	+8.94	-0.147	+0.376	06.01.93	15:34:16
+79.2	+14.86	+8.56	-0.147	+0.376	06.01.93	15:34:19
+79.6	+14.90	+8.31	-0.146	+0.376	06.01.93	15:34:22
+79.9	+14.90	+8.48	-0.146	+0.361	06.01.93	15:34:25
+80.4	+14.90	+8.39	-0.146	+0.369	06.01.93	15:34:28
+81.0	+14.91	+8.39	-0.146	+0.376	06.01.93	15:34:31
+81.4	+14.91	+8.17	-0.146	+0.376	06.01.93	15:34:34
+81.8	+14.90	+8.04	-0.145	+0.369	06.01.93	15:34:36
+82.2	+14.91	+7.94	-0.145	+0.376	06.01.93	15:34:40
+82.5	+14.91	+7.97	-0.145	+0.369	06.01.93	15:34:43
+82.8	+14.92	+8.24	-0.145	+0.354	06.01.93	15:34:46
+83.2	+14.94	+8.40	-0.145	+0.383	06.01.93	15:34:49
+83.5	+14.97	+8.14	-0.145	+0.361	06.01.93	15:34:52
+83.9	+14.99	+8.31	-0.145	+0.361	06.01.93	15:34:55
+84.2	+15.02	+8.22	-0.145	+0.382	06.01.93	15:34:58
+84.5	+15.03	+8.43	-0.143	+0.367	06.01.93	15:35:00
+84.8	+15.07	+7.82	-0.142	+0.418	06.01.93	15:35:04
+85.1	+15.13	+7.68	-0.142	+0.482	06.01.93	15:35:07
+85.5	+15.18	+8.03	-0.142	+0.510	06.01.93	15:35:10
+85.9	+15.22	+7.86	-0.141	+0.510	06.01.93	15:35:13
+86.2	+15.23	+9.04	-0.143	+0.531	06.01.93	15:35:16
+86.6	+15.25	+9.32	-0.141	+0.674	06.01.93	15:35:19
+86.9	+15.26	+8.76	-0.142	+0.696	06.01.93	15:35:22
+87.1	+15.27	+9.09	-0.142	+0.710	06.01.93	15:35:25
+87.3	+15.27	+8.92	-0.141	+0.731	06.01.93	15:35:28
+87.7	+15.29	+9.49	-0.142	+0.760	06.01.93	15:35:31
+88.1	+15.29	+10.11	-0.142	+0.752	06.01.93	15:35:34
+88.4	+15.30	+10.11	-0.142	+0.767	06.01.93	15:35:37
+88.7	+15.30	+10.26	-0.142	+0.774	06.01.93	15:35:40
+89.0	+15.31	+10.58	-0.142	+0.759	06.01.93	15:35:43
+89.1	+15.31	+10.63	-0.142	+0.774	06.01.93	15:35:46
+89.1	+15.31	+11.57	-0.142	+0.767	06.01.93	15:35:49

ANNEXE 2

Mesures effectuées en statique

DEPTH [dbar]	TEMP. [deg.C]	OXY [%]	REDOX [mV]	C 25 [mS/CM]		
+8.7	+14.54	+6.12	-0.163	+0.342	06.01.93	14:18:15
+8.7	+14.54	+6.18	-0.163	+0.372	06.01.93	14:19:27
+8.7	+14.54	+6.17	-0.163	+0.357	06.01.93	14:19:32
+8.6	+14.54	+6.18	-0.163	+0.372	06.01.93	14:19:36
+8.7	+14.54	+6.18	-0.163	+0.372	06.01.93	14:19:39
+8.6	+14.54	+6.18	-0.163	+0.372	06.01.93	14:19:44
+8.7	+14.54	+6.18	-0.163	+0.357	06.01.93	14:19:48
+8.7	+14.54	+6.19	-0.163	+0.364	06.01.93	14:19:52
+8.7	+14.54	+6.19	-0.163	+0.372	06.01.93	14:19:56
+8.7	+14.53	+6.20	-0.163	+0.364	06.01.93	14:20:00
+8.7	+14.54	+6.19	-0.163	+0.350	06.01.93	14:20:03
+8.7	+14.54	+6.19	-0.163	+0.357	06.01.93	14:20:08
+8.6	+14.54	+6.18	-0.163	+0.350	06.01.93	14:20:12
+8.7	+14.54	+6.19	-0.163	+0.379	06.01.93	14:20:16
+8.7	+14.54	+6.19	-0.163	+0.372	06.01.93	14:20:20
+8.6	+14.53	+6.19	-0.163	+0.372	06.01.93	14:20:24
+8.6	+14.54	+6.19	-0.163	+0.357	06.01.93	14:20:28
+8.7	+14.54	+6.19	-0.163	+0.357	06.01.93	14:20:32
+8.7	+14.53	+6.20	-0.163	+0.372	06.01.93	14:20:36
+8.7	+14.54	+5.89	-0.162	+0.350	06.01.93	14:20:40
+9.1	+14.53	+5.68	-0.161	+0.364	06.01.93	14:20:44
+9.7	+14.54	+5.61	-0.160	+0.357	06.01.93	14:20:48
+10.2	+14.53	+5.58	-0.159	+0.372	06.01.93	14:20:52
+10.6	+14.54	+5.59	-0.159	+0.364	06.01.93	14:20:56
+10.9	+14.54	+5.61	-0.159	+0.372	06.01.93	14:21:00
+11.4	+14.53	+5.68	-0.159	+0.364	06.01.93	14:21:04
+11.8	+14.53	+5.71	-0.159	+0.364	06.01.93	14:21:08
+12.3	+14.54	+5.71	-0.159	+0.372	06.01.93	14:21:12
+12.7	+14.53	+5.76	-0.159	+0.372	06.01.93	14:21:16
+13.2	+14.54	+5.79	-0.159	+0.357	06.01.93	14:21:20
+13.7	+14.54	+5.79	-0.159	+0.379	06.01.93	14:21:24
+14.2	+14.53	+5.84	-0.159	+0.364	06.01.93	14:21:28
+14.7	+14.53	+5.83	-0.159	+0.379	06.01.93	14:21:32
+15.0	+14.53	+5.83	-0.159	+0.379	06.01.93	14:21:35
+15.5	+14.54	+5.88	-0.159	+0.357	06.01.93	14:21:40
+16.0	+14.54	+6.07	-0.158	+0.357	06.01.93	14:21:44
+16.2	+14.54	+6.18	-0.158	+0.357	06.01.93	14:21:48
+16.7	+14.54	+6.17	-0.158	+0.357	06.01.93	14:21:52
+17.2	+14.54	+6.20	-0.158	+0.357	06.01.93	14:21:56
+17.5	+14.53	+6.24	-0.158	+0.357	06.01.93	14:21:59
+18.0	+14.54	+6.29	-0.157	+0.372	06.01.93	14:22:04
+18.5	+14.53	+6.31	-0.157	+0.364	06.01.93	14:22:08
+18.9	+14.54	+6.38	-0.157	+0.372	06.01.93	14:22:12
+19.2	+14.54	+6.40	-0.157	+0.372	06.01.93	14:22:16
+19.6	+14.53	+6.47	-0.157	+0.364	06.01.93	14:22:20
+20.0	+14.54	+6.47	-0.157	+0.364	06.01.93	14:22:24
+20.4	+14.53	+6.70	-0.157	+0.364	06.01.93	14:22:28
+20.8	+14.54	+7.01	-0.158	+0.357	06.01.93	14:22:32
+21.3	+14.54	+7.13	-0.159	+0.357	06.01.93	14:22:36
+21.5	+14.54	+7.27	-0.159	+0.372	06.01.93	14:22:40
+22.0	+14.54	+7.34	-0.160	+0.364	06.01.93	14:22:44
+22.3	+14.54	+7.36	-0.159	+0.357	06.01.93	14:22:48
+22.6	+14.54	+7.41	-0.160	+0.372	06.01.93	14:22:52
+23.0	+14.54	+7.45	-0.160	+0.357	06.01.93	14:22:56
+23.3	+14.54	+7.52	-0.160	+0.372	06.01.93	14:23:00
+23.7	+14.54	+7.53	-0.160	+0.364	06.01.93	14:23:04
+24.0	+14.54	+7.65	-0.159	+0.372	06.01.93	14:23:08
+24.4	+14.54	+7.68	-0.160	+0.357	06.01.93	14:23:12
+24.7	+14.54	+7.68	-0.160	+0.364	06.01.93	14:23:16
+25.2	+14.54	+7.77	-0.160	+0.372	06.01.93	14:23:20
+25.6	+14.54	+7.74	-0.159	+0.357	06.01.93	14:23:24
+26.1	+14.54	+7.68	-0.160	+0.357	06.01.93	14:23:28
+26.5	+14.54	+7.68	-0.160	+0.350	06.01.93	14:23:31
+26.9	+14.54	+7.83	-0.160	+0.364	06.01.93	14:23:36
+27.3	+14.54	+8.02	-0.161	+0.350	06.01.93	14:23:40

DEPTH [dbar]	TEMP. [deg.C]	OXY [%]	REDOX [mV]	C 25 [mS/CM]		
+27.8	+14.54	+7.75	-0.160	+0.364	06.01.93	14:23:44
+28.1	+14.54	+7.75	-0.160	+0.357	06.01.93	14:23:48
+28.5	+14.53	+7.71	-0.153	+0.372	06.01.93	14:23:52
+28.9	+14.54	+7.54	-0.153	+0.350	06.01.93	14:23:55
+29.4	+14.54	+7.38	-0.154	+0.357	06.01.93	14:24:00
+29.9	+14.52	+7.21	-0.154	+0.364	06.01.93	14:24:04
+30.3	+14.54	+7.17	-0.155	+0.357	06.01.93	14:24:08
+30.7	+14.54	+7.09	-0.154	+0.357	06.01.93	14:24:12
+31.3	+14.52	+7.03	-0.154	+0.364	06.01.93	14:24:16
+31.6	+14.55	+6.97	-0.154	+0.379	06.01.93	14:24:19
+32.1	+14.55	+6.90	-0.154	+0.372	06.01.93	14:24:24
+32.7	+14.57	+6.82	-0.154	+0.357	06.01.93	14:24:28
+33.2	+14.59	+6.78	-0.154	+0.357	06.01.93	14:24:32
+33.6	+14.59	+6.72	-0.154	+0.349	06.01.93	14:24:36
+33.9	+14.61	+6.66	-0.154	+0.356	06.01.93	14:24:40
+34.4	+14.60	+6.61	-0.154	+0.371	06.01.93	14:24:44
+34.9	+14.61	+6.54	-0.154	+0.349	06.01.93	14:24:48
+35.4	+14.62	+6.48	-0.154	+0.371	06.01.93	14:24:52
+35.8	+14.62	+6.42	-0.154	+0.356	06.01.93	14:24:56
+36.4	+14.62	+6.36	-0.153	+0.378	06.01.93	14:25:00
+36.9	+14.62	+6.30	-0.153	+0.342	06.01.93	14:25:04
+37.3	+14.61	+6.26	-0.153	+0.371	06.01.93	14:25:08
+37.9	+14.61	+6.21	-0.153	+0.356	06.01.93	14:25:12
+38.5	+14.62	+6.17	-0.153	+0.371	06.01.93	14:25:16
+39.1	+14.61	+6.15	-0.153	+0.356	06.01.93	14:25:20
+39.5	+14.61	+6.20	-0.153	+0.371	06.01.93	14:25:24
+39.9	+14.60	+6.12	-0.153	+0.349	06.01.93	14:25:27
+40.2	+14.62	+6.08	-0.153	+0.371	06.01.93	14:25:32
+40.6	+14.63	+6.03	-0.153	+0.371	06.01.93	14:25:36
+40.9	+14.62	+6.03	-0.153	+0.371	06.01.93	14:25:40
+41.4	+14.62	+6.04	-0.153	+0.364	06.01.93	14:25:44
+41.9	+14.64	+6.08	-0.154	+0.363	06.01.93	14:25:48
+42.3	+14.65	+6.18	-0.154	+0.356	06.01.93	14:25:51
+42.8	+14.66	+6.18	-0.155	+0.370	06.01.93	14:25:56
+43.2	+14.66	+6.33	-0.155	+0.349	06.01.93	14:26:00
+43.5	+14.66	+6.11	-0.154	+0.370	06.01.93	14:26:04
+43.8	+14.67	+5.94	-0.154	+0.356	06.01.93	14:26:08
+44.3	+14.67	+5.78	-0.153	+0.363	06.01.93	14:26:12
+44.7	+14.69	+5.71	-0.153	+0.370	06.01.93	14:26:15
+45.2	+14.69	+5.66	-0.153	+0.348	06.01.93	14:26:20
+45.6	+14.70	+5.63	-0.152	+0.363	06.01.93	14:26:24
+46.1	+14.68	+5.67	-0.153	+0.363	06.01.93	14:26:28
+46.5	+14.70	+5.57	-0.152	+0.370	06.01.93	14:26:32
+46.9	+14.72	+5.55	-0.152	+0.363	06.01.93	14:26:36
+47.3	+14.71	+5.56	-0.152	+0.370	06.01.93	14:26:40
+47.7	+14.75	+5.49	-0.152	+0.370	06.01.93	14:26:44
+47.9	+14.74	+5.65	-0.153	+0.377	06.01.93	14:26:48
+48.4	+14.77	+5.76	-0.153	+0.369	06.01.93	14:26:52
+48.8	+14.79	+5.64	-0.153	+0.355	06.01.93	14:26:56
+49.3	+14.80	+5.91	-0.155	+0.355	06.01.93	14:27:00
+49.5	+14.80	+5.64	-0.154	+0.362	06.01.93	14:27:04
+50.0	+14.80	+5.44	-0.153	+0.369	06.01.93	14:27:08
+50.4	+14.81	+5.35	-0.152	+0.369	06.01.93	14:27:12
+50.8	+14.82	+5.30	-0.152	+0.362	06.01.93	14:27:16
+51.2	+14.82	+5.25	-0.152	+0.369	06.01.93	14:27:20
+51.6	+14.82	+5.22	-0.152	+0.376	06.01.93	14:27:23
+52.1	+14.83	+5.16	-0.151	+0.376	06.01.93	14:27:28
+52.5	+14.84	+5.14	-0.151	+0.362	06.01.93	14:27:32
+52.9	+14.84	+5.10	-0.151	+0.362	06.01.93	14:27:36
+53.5	+14.84	+5.09	-0.151	+0.376	06.01.93	14:27:40
+54.0	+14.84	+5.05	-0.151	+0.347	06.01.93	14:27:44
+54.4	+14.84	+5.02	-0.151	+0.369	06.01.93	14:27:47
+54.9	+14.85	+4.99	-0.151	+0.362	06.01.93	14:27:52
+55.4	+14.85	+5.01	-0.151	+0.369	06.01.93	14:27:56
+55.9	+14.85	+5.12	-0.151	+0.369	06.01.93	14:28:00

DEPTH [dbar]	TEMP. [deg.C]	OXY [%]	REDOX [mV]	C 25 [mS/CM]		
+56.3	+14.85	+5.22	-0.152	+0.369	06.01.93	14:28:04
+56.8	+14.85	+5.35	-0.152	+0.362	06.01.93	14:28:08
+57.1	+14.85	+5.64	-0.154	+0.376	06.01.93	14:28:12
+57.5	+14.85	+5.67	-0.155	+0.354	06.01.93	14:28:16
+57.8	+14.85	+5.55	-0.155	+0.362	06.01.93	14:28:20
+58.2	+14.85	+5.35	-0.154	+0.347	06.01.93	14:28:24
+58.5	+14.85	+5.38	-0.154	+0.354	06.01.93	14:28:28
+58.9	+14.85	+5.48	-0.153	+0.369	06.01.93	14:28:32
+59.3	+14.85	+5.30	-0.153	+0.376	06.01.93	14:28:36
+59.6	+14.87	+5.61	-0.154	+0.369	06.01.93	14:28:40
+60.1	+14.87	+5.38	-0.154	+0.361	06.01.93	14:28:44
+60.6	+14.87	+5.57	-0.154	+0.369	06.01.93	14:28:48
+61.0	+14.88	+5.50	-0.155	+0.376	06.01.93	14:28:52
+61.3	+14.88	+5.64	-0.153	+0.354	06.01.93	14:28:56
+61.6	+14.88	+5.66	-0.156	+0.354	06.01.93	14:29:00
+62.0	+14.88	+5.48	-0.153	+0.383	06.01.93	14:29:04
+62.3	+14.88	+5.84	-0.154	+0.361	06.01.93	14:29:08
+62.6	+14.88	+5.55	-0.154	+0.368	06.01.93	14:29:12
+62.9	+14.88	+5.50	-0.154	+0.376	06.01.93	14:29:16
+63.3	+14.89	+5.33	-0.153	+0.354	06.01.93	14:29:19
+63.6	+14.88	+5.25	-0.153	+0.354	06.01.93	14:29:24
+64.1	+14.89	+5.19	-0.153	+0.354	06.01.93	14:29:28
+64.6	+14.89	+5.27	-0.153	+0.368	06.01.93	14:29:32
+65.0	+14.90	+5.23	-0.152	+0.354	06.01.93	14:29:36
+65.4	+14.90	+5.10	-0.152	+0.346	06.01.93	14:29:40
+65.8	+14.91	+4.96	-0.151	+0.368	06.01.93	14:29:43
+66.2	+14.91	+4.89	-0.151	+0.375	06.01.93	14:29:48
+66.6	+14.91	+4.86	-0.151	+0.354	06.01.93	14:29:52
+67.0	+14.92	+4.83	-0.150	+0.383	06.01.93	14:29:56
+67.3	+14.92	+4.94	-0.151	+0.361	06.01.93	14:30:00
+67.7	+14.92	+4.84	-0.150	+0.375	06.01.93	14:30:04
+68.1	+14.94	+4.82	-0.150	+0.368	06.01.93	14:30:08
+68.5	+14.95	+4.84	-0.150	+0.361	06.01.93	14:30:12
+69.0	+15.01	+5.05	-0.152	+0.360	06.01.93	14:30:16
+69.3	+15.03	+5.00	-0.151	+0.374	06.01.93	14:30:20
+69.6	+15.07	+4.91	-0.151	+0.367	06.01.93	14:30:24
+70.0	+15.08	+4.79	-0.146	+0.388	06.01.93	14:30:27
+70.4	+15.13	+4.54	-0.145	+0.489	06.01.93	14:30:32
+70.7	+15.20	+4.52	-0.144	+0.581	06.01.93	14:30:36
+70.8	+15.22	+4.54	-0.144	+0.646	06.01.93	14:30:40
+71.0	+15.23	+4.69	-0.144	+0.696	06.01.93	14:30:44
+71.2	+15.22	+4.90	-0.144	+0.717	06.01.93	14:30:48
+71.2	+15.23	+5.05	-0.144	+0.696	06.01.93	14:30:51
+71.5	+15.25	+5.13	-0.144	+0.746	06.01.93	14:30:56
+71.7	+15.26	+5.21	-0.144	+0.753	06.01.93	14:31:00
+72.0	+15.26	+5.31	-0.144	+0.767	06.01.93	14:31:04
+72.1	+15.26	+5.38	-0.144	+0.767	06.01.93	14:31:08
+72.3	+15.27	+5.44	-0.144	+0.774	06.01.93	14:31:12
+72.4	+15.27	+5.45	-0.144	+0.767	06.01.93	14:31:16
+72.7	+15.27	+5.52	-0.145	+0.760	06.01.93	14:31:20
+73.0	+15.28	+5.80	-0.145	+0.781	06.01.93	14:31:24
+73.3	+15.28	+6.01	-0.146	+0.781	06.01.93	14:31:28
+73.6	+15.29	+5.92	-0.146	+0.781	06.01.93	14:31:32
+73.9	+15.29	+5.75	-0.145	+0.767	06.01.93	14:31:35
+74.1	+15.29	+5.69	-0.145	+0.774	06.01.93	14:31:40
+74.3	+15.29	+5.66	-0.145	+0.781	06.01.93	14:31:44
+74.5	+15.29	+5.70	-0.146	+0.781	06.01.93	14:31:48
+74.5	+15.29	+5.65	-0.145	+0.759	06.01.93	14:31:52
+74.4	+15.29	+5.97	-0.145	+0.767	06.01.93	14:31:56
+74.4	+15.29	+6.08	-0.146	+0.781	06.01.93	14:32:00
+74.4	+15.29	+6.10	-0.147	+0.788	06.01.93	14:32:04
+74.4	+15.29	+6.13	-0.147	+0.774	06.01.93	14:32:08

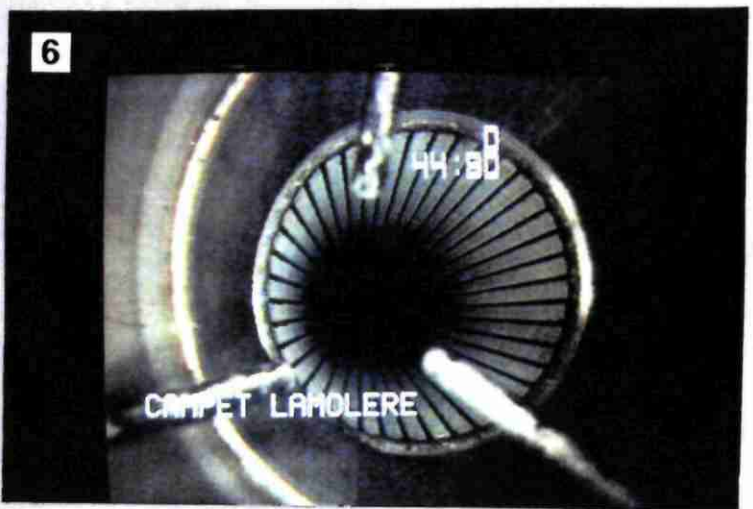
DEPTH [dbar]	TEMP. [deg.C]	OXY [%]	REDOX [mV]	C 25 [mS/CM]		
+71.2	+14.85	+4.20	-0.152	+0.369	06.01.93	14:28:04
+71.7	+14.85	+4.33	-0.152	+0.362	06.01.93	14:28:08
+72.0	+14.85	+4.63	-0.154	+0.376	06.01.93	14:28:12
+72.4	+14.85	+4.65	-0.155	+0.355	06.01.93	14:28:16
+72.7	+14.85	+4.54	-0.155	+0.362	06.01.93	14:28:20
+73.1	+14.85	+4.34	-0.154	+0.347	06.01.93	14:28:24
+73.4	+14.85	+4.36	-0.154	+0.355	06.01.93	14:28:28
+73.8	+14.85	+4.47	-0.153	+0.369	06.01.93	14:28:32
+74.2	+14.85	+4.29	-0.153	+0.376	06.01.93	14:28:36
+74.5	+14.87	+4.59	-0.154	+0.369	06.01.93	14:28:40
+75.0	+14.87	+4.37	-0.154	+0.362	06.01.93	14:28:44
+75.5	+14.87	+4.56	-0.154	+0.369	06.01.93	14:28:48
+75.9	+14.88	+4.48	-0.155	+0.376	06.01.93	14:28:52
+76.2	+14.88	+4.63	-0.153	+0.354	06.01.93	14:28:56
+76.5	+14.88	+4.65	-0.156	+0.354	06.01.93	14:29:00
+76.9	+14.88	+4.46	-0.153	+0.383	06.01.93	14:29:04
+77.2	+14.88	+4.83	-0.154	+0.362	06.01.93	14:29:08
+77.5	+14.88	+4.53	-0.154	+0.369	06.01.93	14:29:12
+77.8	+14.88	+4.48	-0.154	+0.376	06.01.93	14:29:16
+78.2	+14.89	+4.32	-0.153	+0.354	06.01.93	14:29:19
+78.5	+14.88	+4.23	-0.153	+0.354	06.01.93	14:29:24
+79.0	+14.89	+4.18	-0.153	+0.354	06.01.93	14:29:28
+79.5	+14.89	+4.25	-0.153	+0.369	06.01.93	14:29:32
+79.9	+14.90	+4.21	-0.152	+0.354	06.01.93	14:29:36
+80.3	+14.90	+4.09	-0.152	+0.347	06.01.93	14:29:40
+80.7	+14.91	+3.95	-0.151	+0.369	06.01.93	14:29:43
+81.1	+14.91	+3.88	-0.151	+0.376	06.01.93	14:29:48
+81.5	+14.91	+3.85	-0.151	+0.354	06.01.93	14:29:52
+81.9	+14.92	+3.82	-0.150	+0.383	06.01.93	14:29:56
+82.2	+14.92	+3.93	-0.151	+0.361	06.01.93	14:30:00
+82.6	+14.92	+3.83	-0.150	+0.376	06.01.93	14:30:04
+83.0	+14.94	+3.80	-0.150	+0.368	06.01.93	14:30:08
+83.4	+14.95	+3.82	-0.150	+0.361	06.01.93	14:30:12
+83.9	+15.01	+4.04	-0.152	+0.360	06.01.93	14:30:16
+84.2	+15.03	+3.99	-0.151	+0.375	06.01.93	14:30:20
+84.5	+15.07	+3.90	-0.151	+0.367	06.01.93	14:30:24
+84.9	+15.08	+3.78	-0.146	+0.389	06.01.93	14:30:27
+85.3	+15.13	+3.54	-0.145	+0.489	06.01.93	14:30:32
+85.6	+15.20	+3.52	-0.144	+0.582	06.01.93	14:30:36
+85.7	+15.22	+3.54	-0.144	+0.646	06.01.93	14:30:40
+85.9	+15.23	+3.69	-0.144	+0.696	06.01.93	14:30:44
+86.1	+15.22	+3.90	-0.144	+0.718	06.01.93	14:30:48
+86.1	+15.23	+4.04	-0.144	+0.696	06.01.93	14:30:51
+86.4	+15.25	+4.13	-0.144	+0.746	06.01.93	14:30:56
+86.6	+15.26	+4.21	-0.144	+0.753	06.01.93	14:31:00
+86.9	+15.26	+4.31	-0.144	+0.767	06.01.93	14:31:04
+87.0	+15.26	+4.38	-0.144	+0.767	06.01.93	14:31:08
+87.2	+15.27	+4.44	-0.144	+0.775	06.01.93	14:31:12
+87.3	+15.27	+4.45	-0.144	+0.767	06.01.93	14:31:16
+87.6	+15.27	+4.51	-0.145	+0.760	06.01.93	14:31:20
+87.9	+15.28	+4.80	-0.145	+0.781	06.01.93	14:31:24
+88.2	+15.28	+5.01	-0.146	+0.781	06.01.93	14:31:28
+88.5	+15.29	+4.92	-0.146	+0.781	06.01.93	14:31:32
+88.8	+15.29	+4.75	-0.145	+0.767	06.01.93	14:31:35
+89.0	+15.29	+4.69	-0.145	+0.774	06.01.93	14:31:40
+89.2	+15.29	+4.66	-0.145	+0.781	06.01.93	14:31:44
+89.4	+15.29	+4.70	-0.146	+0.781	06.01.93	14:31:48
+89.4	+15.29	+4.65	-0.145	+0.760	06.01.93	14:31:52
+89.3	+15.29	+4.97	-0.145	+0.767	06.01.93	14:31:56
+89.3	+15.29	+5.08	-0.146	+0.781	06.01.93	14:32:00
+89.3	+15.29	+5.10	-0.147	+0.788	06.01.93	14:32:04
+89.3	+15.29	+5.13	-0.147	+0.774	06.01.93	14:32:08

ANNEXE 3

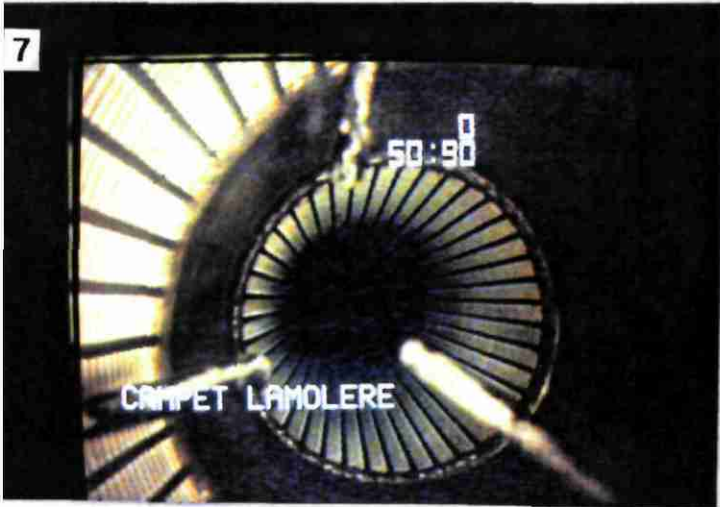
Photos d'écran

Photos d'écran

1. **Générique**
2. **Tête de l'ouvrage**
3. **Raccord vissé à – 5,30 m**
4. **Porte-crépines avec massif de gravier à – 36,20 m**
5. **Raccord soudé tube plein inox à 38,50 m**
6. **Raccord soudé tube plein. Crépines inox à 44,80 m**
7. **Raccord soudé crépines à – 50,90 m**
8. **Raccord soudé crépines à – 51,00 m**
9. **Raccord soudé crépines à – 75,50 m**
10. **Fond de forage. Dépôts**



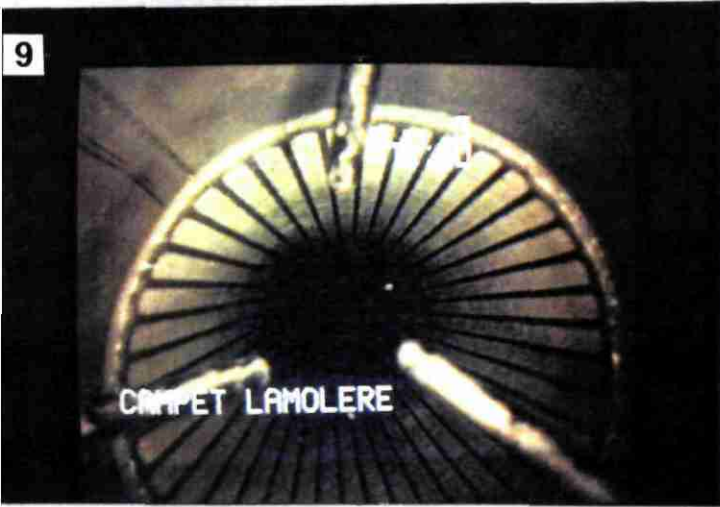
7



8



9



10

